Three black silhouettes of people standing side-by-side against a blue background. The silhouettes are of varying heights and are positioned in the foreground, partially overlapping the text.

This CD has been created to inform our residents about the police services that are provided to them. The information provided in this presentation will help reduce your chances of being a victim of crime. Additional information provided will also help improve the overall safety and welfare of the residents of our community.

# *Mission Statement*



The mission of the Upper Uwchlan Township Police Department is to work in a true partnership with our fellow citizens to enhance the quality of life in our community.

And, by raising the level of public safety through law enforcement, to reduce the fear and incidence of crime. In accomplishing these goals: service will be our commitment, honor and integrity our mandate.

# ***How to Contact Us***



**The Police Department is dispatched by the Chester County Police Radio Room. There is no police dispatcher located at the police station. If you need police services at anytime please call the following numbers:**

**➤Police , Fire & EMS Emergencies**

**Dial “911”**

**➤Non-Emergencies**

**Dial “610.692.5100”**





# Police Department Operations



# ***Uniformed Patrol***



**Uniformed Patrol is the front line service of the Department. These patrols are on duty twenty-four hours a day, seven days a week. Officers are deployed by utilizing various types of methods and resources.**



# *Patrol Cars*



# *Motorcycle Unit*





# *Highway Safety Operations*



# ***Detective Unit***

**The Detective Unit is responsible for the follow up of all reported crimes. The Unit also conducts pro-active investigations of criminal activity within the community. Members are graduates of various state and federal schools in the field of criminal investigations.**





# ***Vehicle Accident Investigation***

The Upper Uwchlan Township Police Department is a participating member of a regional accident investigation team.

**S**erious  
**C**rash  
**A**ssistance  
**T**eam



# Member of the Western Chester County Emergency Response Team

The Western Chester County Emergency Response Team is a cooperative effort between municipalities. This Team specializes in providing a strategic response to those situations above and beyond the capabilities of ordinary patrol duties. The Western Chester County Emergency Response Team responds to barricaded subjects, hostage situations, high risk warrant services and protection details. The Team can also be activated for other serious or emergency situations where their special training could be of assistance. With specialized tactics, weapons and equipment many more options are available than would be available for the officer on patrol.





# *Community Relations*



# *Business Administrative Office*



**The Police Department is located at 140 Pottstown Pike. .  
You may contact the business office at the following  
numbers:**

 **Telephone 610.458.5862**

 **Facsimile 610.458.8931**

# ***Crime Prevention Tips***



# How to Keep the Burglar Out

## What the burglar looks for:

- Signs that the home is unoccupied.
- Easy access, use the locks you have on all doors and windows.

**House Numbers:** House numbers should be visible from the street, numbers not script, and of a contrasting color.

**Windows:** Glass is vulnerable to attack. Fortunately, burglars are reluctant to break windows because of the noise and windows are often visible from the street and other residences.

**Lights:** Front, back and by garages are recommended. Motion detector lights are an alternative to lights being on all the time. Interior-timed lighting devices should be utilized when not home.

**Locks:** Use dead bolt locks having a 1" throw are recommended. Be sure to use a high security strike plate with 3" screws.

**Garage:** Never leave unlocked, especially if it has a connecting door to the house. Lock away tools and ladders so that a thief cannot use them. Attached garages provide visual cover for a burglar

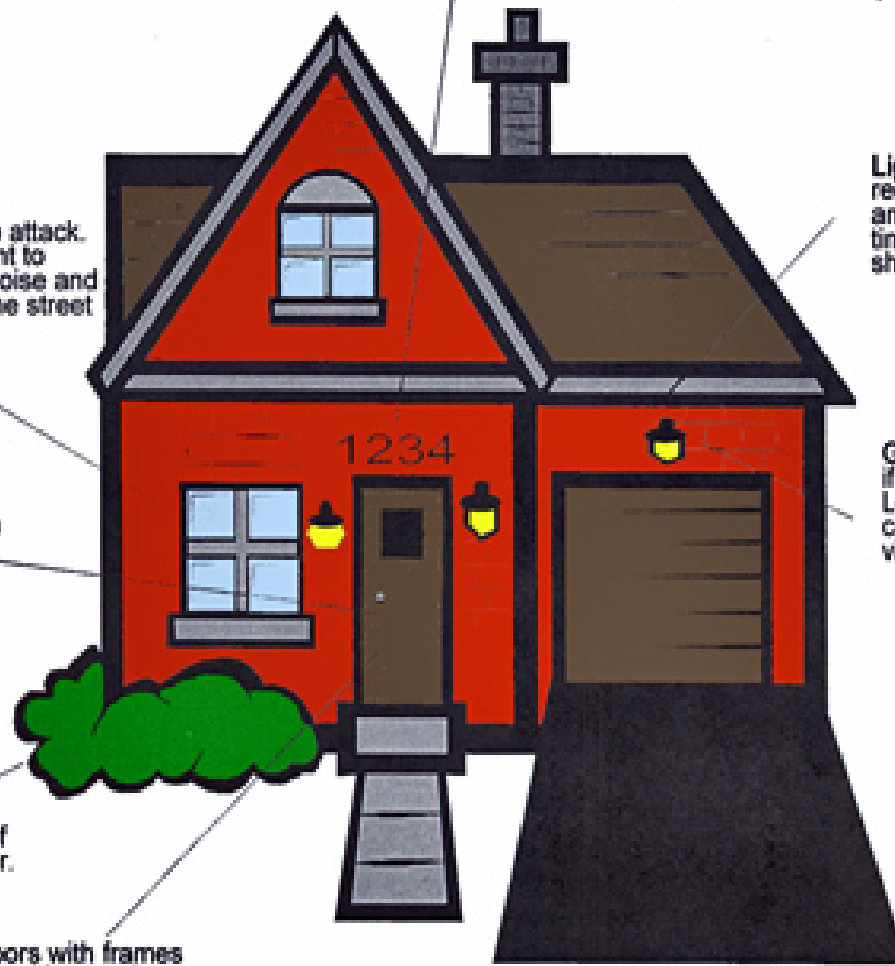
**Shrubs:** Should be kept low enough so they do not block possible points of entry or to conceal a potential attacker.

**Basement Windows:** Often overlooked, basement windows should be secured to prevent them from being forced open. Window locks should not be vulnerable if glass is broken.

**Doors:** Solid core wood doors with frames that cannot be spread apart with a pry bar are recommended.

**Burglar Alarm Signs:** Be sure to prominently display all signs and decals.

**Spare Keys:** Never leave a spare key in a hiding place outside your home. Burglars know all the hiding places. Leave one with a trusted neighbor.





**WHAT IS YOUR CAR SCREAMING OUT TO THIEVES?**



**Psssttt...  
FREE STUFF!**

**Don't make  
your car  
into a big gift-box  
for thieves!**

# ***Going on Vacation***

**Have your lawn mowed.**

**Stop all deliveries such as newspapers.**

**Have a trusted neighbor get your mail.**

**Don't discuss your absence in public.**

**Arrange a daily check by a trusted neighbor.**

**Put valuables in a vault or safe.**

**Use a clock timer for your lights, don't advertise by pulling shades or drapes fully closed.**

**Ask a trusted neighbor to park in your driveway.**



**Don't advertise what you have  
in your curbside trash. Destroy  
all containers.**



# Identity Theft

- *Protect your personal information*
- *Treat your trash and mail carefully*
- *Be on guard when using the internet*
- *Select intricate passwords for all account access*
- *Verify all sources before sharing personal information*
- *Safeguard your purse or wallet*
- *Store personal information in secure locations*
- *Cover key pads when entering your PIN*
- *Check your credit on a regular basis*



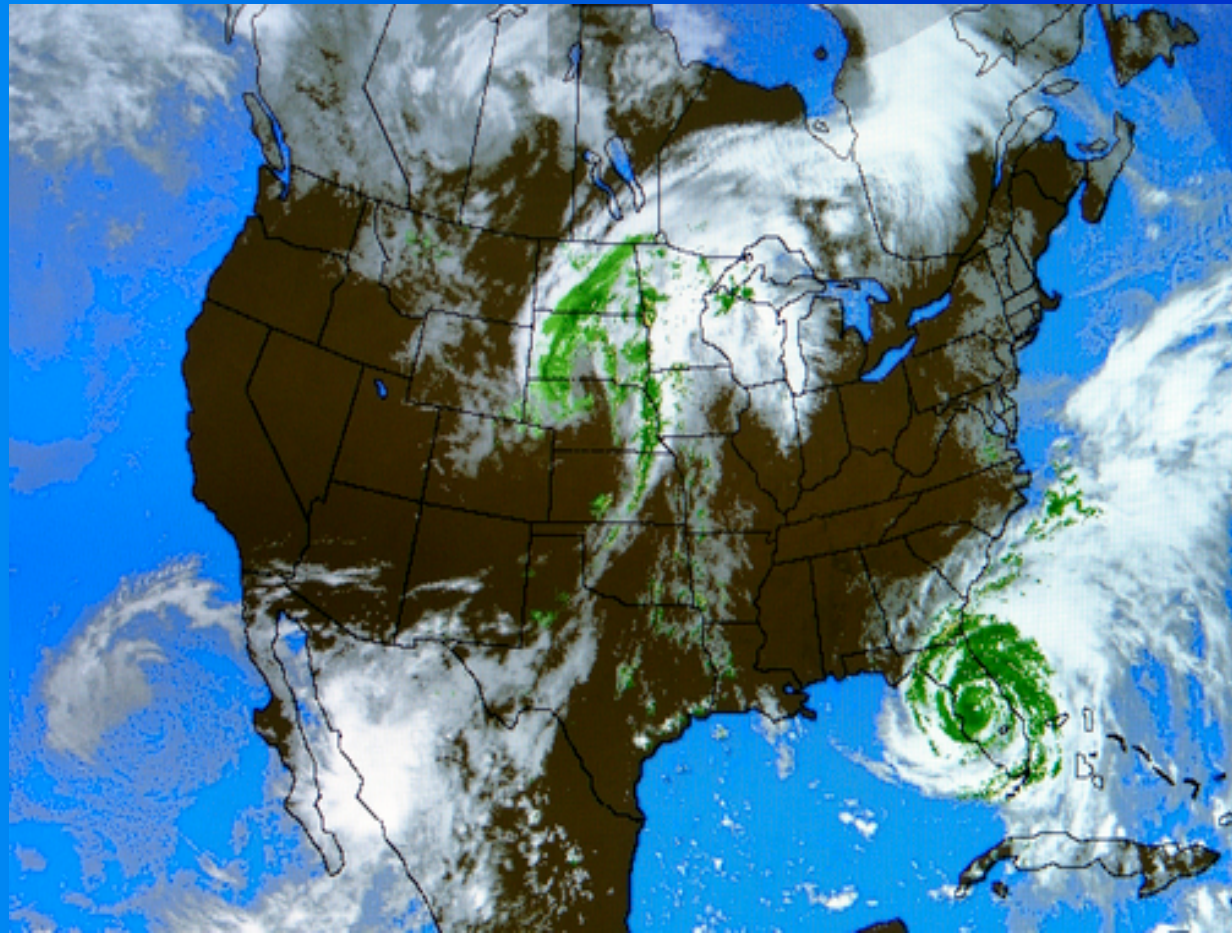
# Social Media

*Don't post  
your  
personal  
plans or  
information*





# ***Emergency Preparedness Guide For Weather Events***







Ready Notify PA uses the Roam Secure Alert Network to immediately contact you during a major crisis or emergency. Ready Notify PA delivers important emergency alerts, notifications and updates to you on all your devices:

email account (work, home, other)

cell phone (via SMS)

pager

smartphone/PDA (BlackBerry, Treo & and other handhelds)

When an incident or emergency occurs, authorized senders will instantly notify you using the Roam Secure Alert Network.

Ready Notify PA is your personal connection to real-time updates, instructions on where to go, what to do, or what not to do, who to contact and other important information.

[www.ReadNotifyPA.org](http://www.ReadNotifyPA.org)

# *Thunderstorms*



- *Get inside*
- *Do not shower, bathe or swim*
- *Do not use a corded phone*
- *Unplug all electronic items*
- *Stay away from metal equipment such as fences, poles, etc.*
- *Do not stand under a tree or in an open field*

# ***Tornadoes & High Wind Storms***



Designate a shelter area in your home.  
Basements are the safest. Otherwise, use an interior room or hallway on the ground floor.

Stay tuned to your radio or TV for any updates.

Stay out of large, flat buildings with wide open areas such as supermarkets or shopping malls.

Stock your home with a flashlight, a battery powered radio, extra batteries and a first aid kit.

Leave vehicles at once. Seek shelter in a sturdy building.

If you are caught outside, lie flat in a ditch and cover your head. Do not get under bridges or overpasses. Be aware of flying debris.

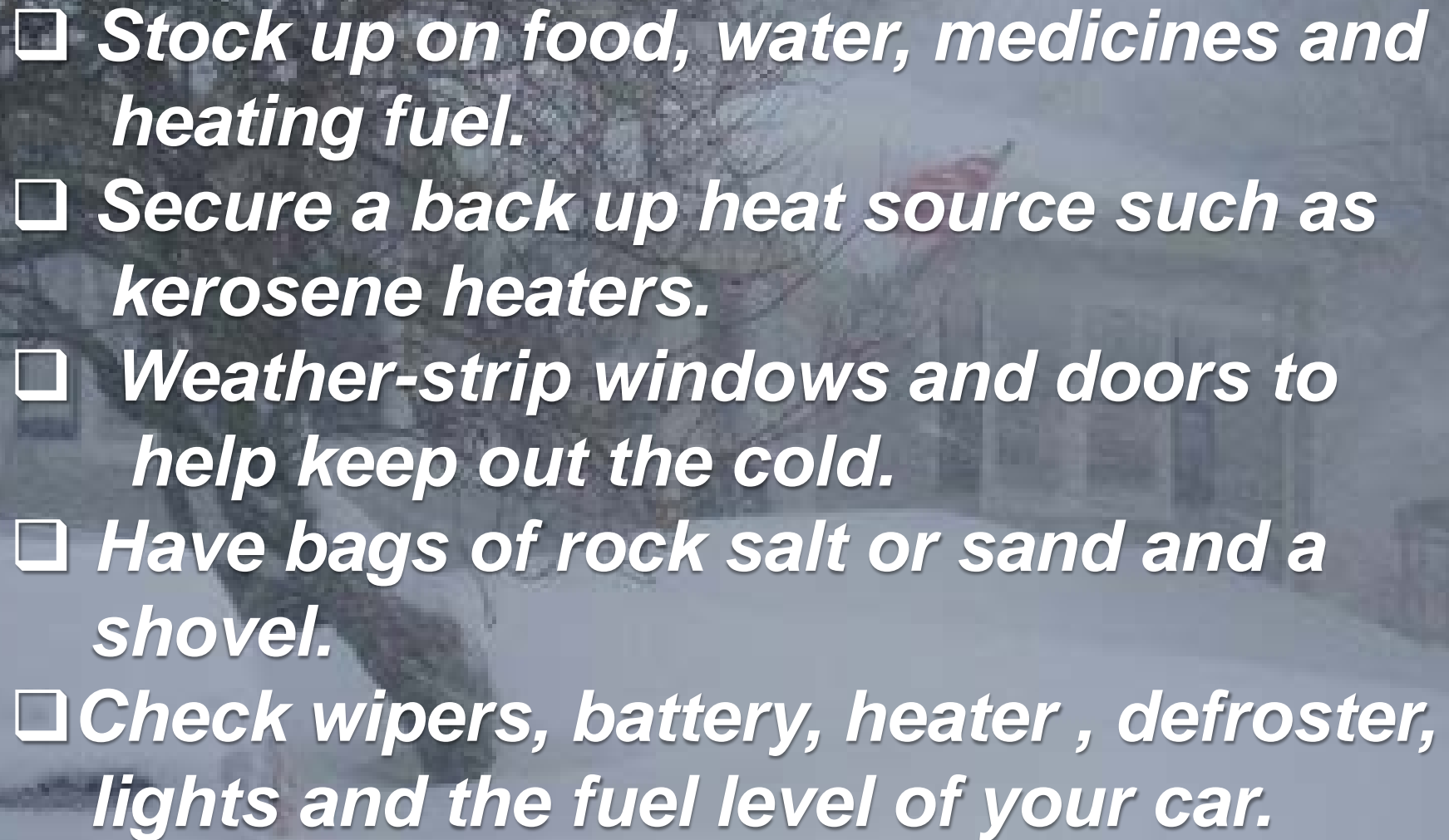
Never attempt to outrun a tornado.





# ***WINTER STORMS***



- 
- ☐ *Stock up on food, water, medicines and heating fuel.*
  - ☐ *Secure a back up heat source such as kerosene heaters.*
  - ☐ *Weather-strip windows and doors to help keep out the cold.*
  - ☐ *Have bags of rock salt or sand and a shovel.*
  - ☐ *Check wipers, battery, heater , defroster, lights and the fuel level of your car.*



# If you get stranded in your vehicle.....

Turn on your hazard lights

Don't leave your vehicle unless you see a safe structure to take refuge in

If there is no building, stay in your car where rescuers are more likely to find you

Wrap yourself in blankets, seat covers, floor mats and other items to stay warm

Run the engine for 10 minutes each hour to keep warm, slightly open a window for ventilation when doing this

Balance the use of lights and heater to conserve the battery





**Upper Uwchlan Township Ordinance prohibits the parking of vehicles on any public roads during any snow fall. Roadways must be kept clear to allow the full plowing of roadways and passage for emergency service vehicles.**

# Upper Uwchlan Township Snow Removal Ordinance



**The depositing of snow onto any public roadway or the property of another is prohibited. Violators are subject to fine and the cost of the snow removal.**



# ***Township Municipal Services***







**The Township Municipal Building is located at 140 Pottstown Pike. All inquiries to other municipal services can be answered at the Municipal Offices. These are services such as public works, road projects, trash, sewer, tax bills, building and zoning. The Municipal Offices can be contacted at 610.458.9400**

# *Firefighting & Rescue Services*



**There is no Township based Fire and Rescue Services. Four separate fire companies provide this service to our community from outside of the Township. Each fire company is designated to respond to a specific geographic area within the Township. These companies are all volunteer. They are always seeking new members to join their organizations. There are many roles that need to be filled. These positions are not only front line firefighting positions, but internal business management functions as well.**

*Chester County Station 47  
Lionville Fire Company  
South Village Avenue  
PO Box 478  
Lionville, PA 19353  
[www.lionvillefire.org](http://www.lionvillefire.org)*





*Chester County Station 48  
Glen Moore Fire Company  
Fairview Road and Route 282  
Glen Moore, PA 19343  
[www.glenmoorefire.org](http://www.glenmoorefire.org)*



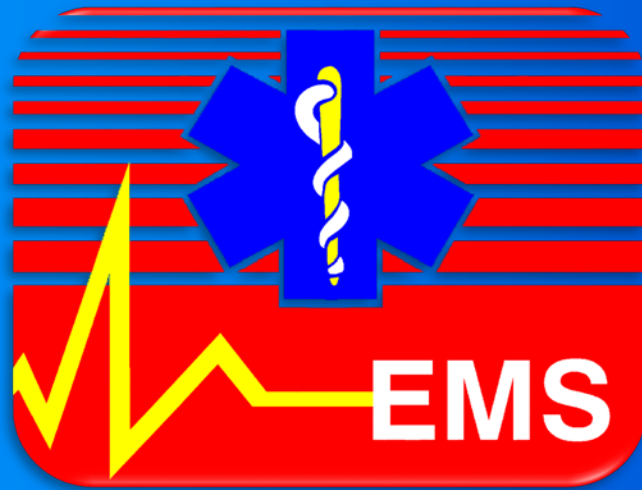


*Chester County Station 49  
East Brandywine Fire Company  
2096 Bondsville Road  
Downingtown, PA 19335  
[www.ebfc49.org](http://www.ebfc49.org)*



*Chester County Station 73  
Ludwig's Corner Fire Company  
1325 North Pottstown Pike  
Glen Moore, PA 19343  
[www.ludwigscornerfire.com](http://www.ludwigscornerfire.com)*





Emergency Medical Services are provided by agencies located outside of the Township. These organizations provide both Basic Life Support and Paramedic services. They are comprised of volunteer and career personnel. These organizations are always looking for people to volunteer in front line and administrative positions.



**CHESTER COUNTY STATION 87**



# **UWCHLAN AMBULANCE CORPS**



**Chester County Station 87  
Uwachlan Ambulance Corps  
70 Welsh Pool Road  
Exton, PA 19341  
[www.station87.com](http://www.station87.com)**



**Chester County Station 46  
Minquas Fire Company  
202 East Lancaster Avenue  
Downingtown, PA 19335  
[www.minquasfire.org](http://www.minquasfire.org)**





*For more information, visit us at  
“[www.upperuwchlan-pa.gov](http://www.upperuwchlan-pa.gov)”*