



UPPER UWCHLAN TOWNSHIP

140 Pottstown Pike
Chester Springs, PA 19425
(P) 610-458-9400 (F) 610-458-0307
www.upperuwchlan-pa.gov



ADMINISTRATION

Date: February 22, 2017

FOR IMMEDIATE RELEASE

CONSTRUCTION TO BEGIN ON THE EAGLE VILLAGE TRAIL CONNECTION

CHESTER SPRINGS, PA – Upper Uwchlan Township has issued a notice to proceed to [Scott Contractors](#) for the Eagle Village Trail Connection Project. Construction activities are expected to begin on or about Monday, February 27, 2017. The Eagle Village Trail Connection project will extend and connect the existing pedestrian trail on the west side of Pottstown Pike in front of the Reserve at Waynebrook to both Darrell Drive at the Upland Farms Park and Pottstown Pike and Park Road and will extend and connect the pedestrian trail along the 100 block of Little Conestoga Road to Eagle Village at Little Conestoga Road and Park Road (see attached project overview). Construction is expected to take approximately eight (8) weeks, weather dependent. Construction activity is, at times, expected to impact motor vehicle traffic on both Pottstown Pike and Little Conestoga Road. Traffic impacts are expected to be limited to intermittent lane restrictions, when needed, between the hours of 9:00 AM and 3:00 PM, with traffic being controlled by flaggers, when necessary. Updates on lane restrictions will be posted on the Township's website and social media pages.

Upper Uwchlan Township fully funded the design, permitting, and management and inspection of these trail extensions using Township funds. Construction is fully funded with a Federal Transportation Grant. Board Chairman Kevin Kerr noted "This project is an excellent example of the Township's commitment to constructing and maintaining an extensive, connected trail network and doing so in a shared, financially responsible manner." Upper Uwchlan Township would like to extend our thanks to the property owners who assisted with needed easements or right of way (Fred Gunther and the Cutler Group), the [DVRPC](#), [PennDOT District 6](#), and [McMahon Associates](#) for their assistance on this project.

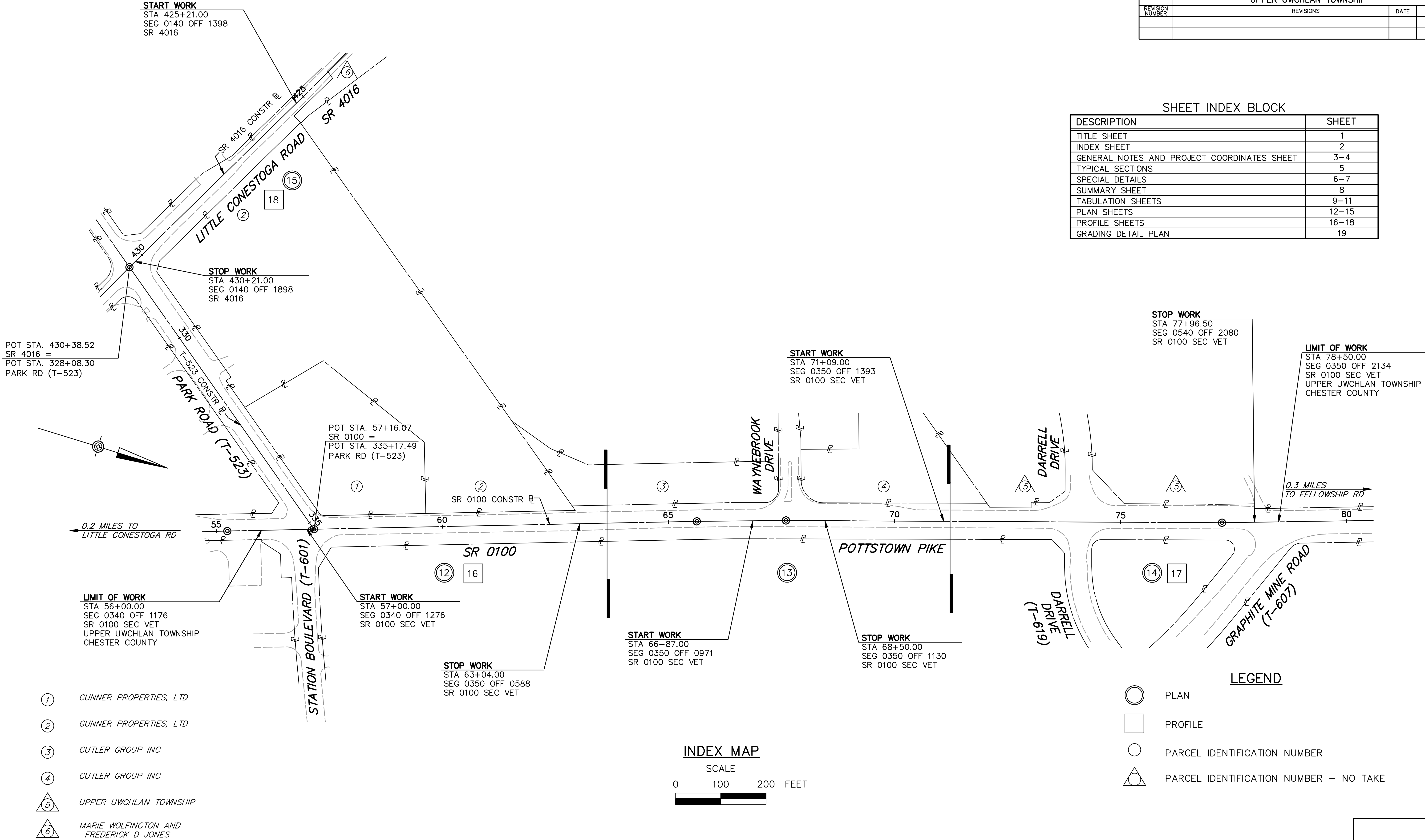
Upper Uwchlan Township is a Township of the Second class, population 11,500, located in Central Chester County, PA. Visit us on the web at www.upperuwchlan-pa.gov. Like us on Facebook and Twitter @upperuwchlan.

#####

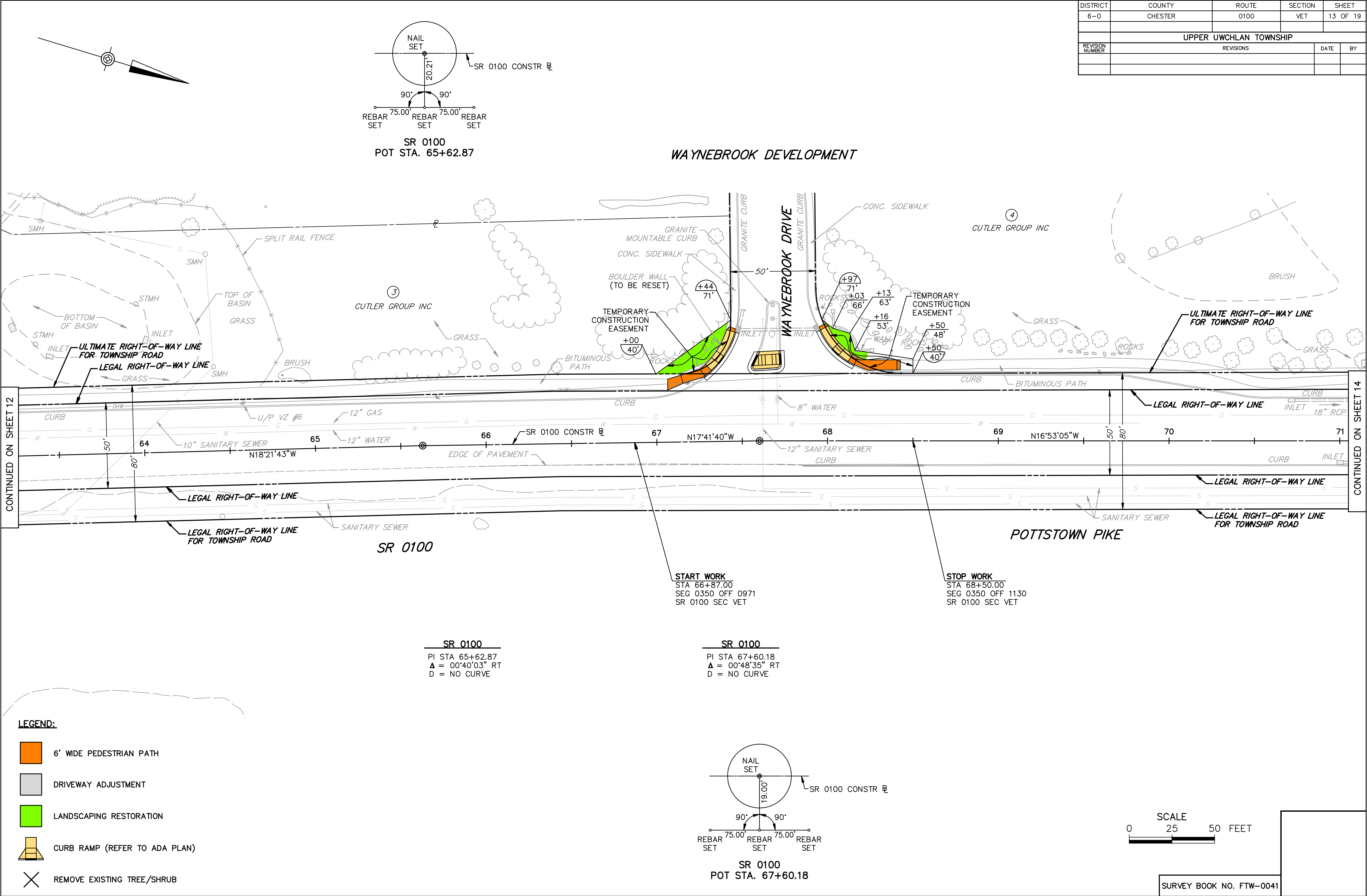
DISTRICT	COUNTY	ROUTE	SECTION	SHEET	
6-0	CHESTER	0100	VET	2 OF 19	
UPPER UWCHLAN TOWNSHIP					
REVISION NUMBER	REVISIONS			DATE	BY

SHEET INDEX BLOCK

DESCRIPTION	SHEET
TITLE SHEET	1
INDEX SHEET	2
GENERAL NOTES AND PROJECT COORDINATES SHEET	3-4
TYPICAL SECTIONS	5
SPECIAL DETAILS	6-7
SUMMARY SHEET	8
TABULATION SHEETS	9-11
PLAN SHEETS	12-15
PROFILE SHEETS	16-18
GRADING DETAIL PLAN	19



DISTRICT	COUNTY	ROUTE	SECTION	SHEET	
6-0	CHESTER	0100	VET	13 OF 19	
UPPER UWCHLAN TOWNSHIP					
REVISION NUMBER	REVISIONS			DATE	BY

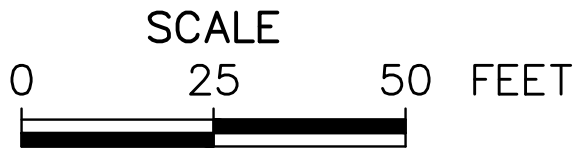


LEGEND:

- 6' WIDE PEDESTRIAN PATH
- DRIVEWAY ADJUSTMENT
- LANDSCAPING RESTORATION
- CURB RAMP (REFER TO ADA PLAN)
- REMOVE EXISTING TREE/SHRUB

SR 0100
PI STA 65+62.87
Δ = 00°40'03" RT
D = NO CURVE

SR 0100
PI STA 67+60.18
Δ = 00°48'35" RT
D = NO CURVE



SURVEY BOOK NO. FTW-0041

DISTRICT	COUNTY	ROUTE	SECTION	SHEET	
6—0	CHESTER	0100	VET	14 OF 19	
	UPPER UWCHLAN TOWNSHIP				
REVISION NUMBER	REVISIONS			DATE	BY

BM #2 ELEV. 479.28
56.60' LT STA. 72+65.52
SQUARE CUT

**PEDESTRIAN
PATH (SEC. 3)**

PI STA 69+85.25
 $\Delta = 19^{\circ}03'22''$ LT
D = 67'03'18"
T = 14.34'
L = 28.42'
R = 85.45'
E = 1.20'
PC STA 69+70.91
PT STA 69+99.33

**PEDESTRIAN
PATH (SEC. 3)**

PI STA 70+14.89
 $\Delta = 47^{\circ}59'53''$ LT
D = 260'26'07"
T = 9.79'
L = 18.43'
R = 22.00'
E = 2.08'
PC STA 70+05.09
PT STA 70+23.52

**PEDESTRIAN
PATH (SEC. 3)**

PI STA 70+69.23
 $\Delta = 10^{\circ}00'00''$ LT
D = 23'11'48"
T = 21.61'
L = 43.11'
R = 247.00'
E = 0.94'
PC STA 70+47.62
PT STA 70+90.73

**PEDESTRIAN
PATH (SEC. 3)**

PI STA 71+50.07
 $\Delta = 05^{\circ}43'30''$ LT
D = 28'38'52"
T = 10.00'
L = 19.98'
R = 200.00'
E = 0.25'
PC STA 71+40.07
PT STA 71+60.05

**PEDESTRIAN
PATH (SEC. 3)**

PI STA 71+86.41
 $\Delta = 13^{\circ}38'38''$ RT
D = 57'17'45"
T = 11.96'
L = 23.81'
R = 100.00'
E = 0.71'
PC STA 71+74.44
PT STA 71+98.26

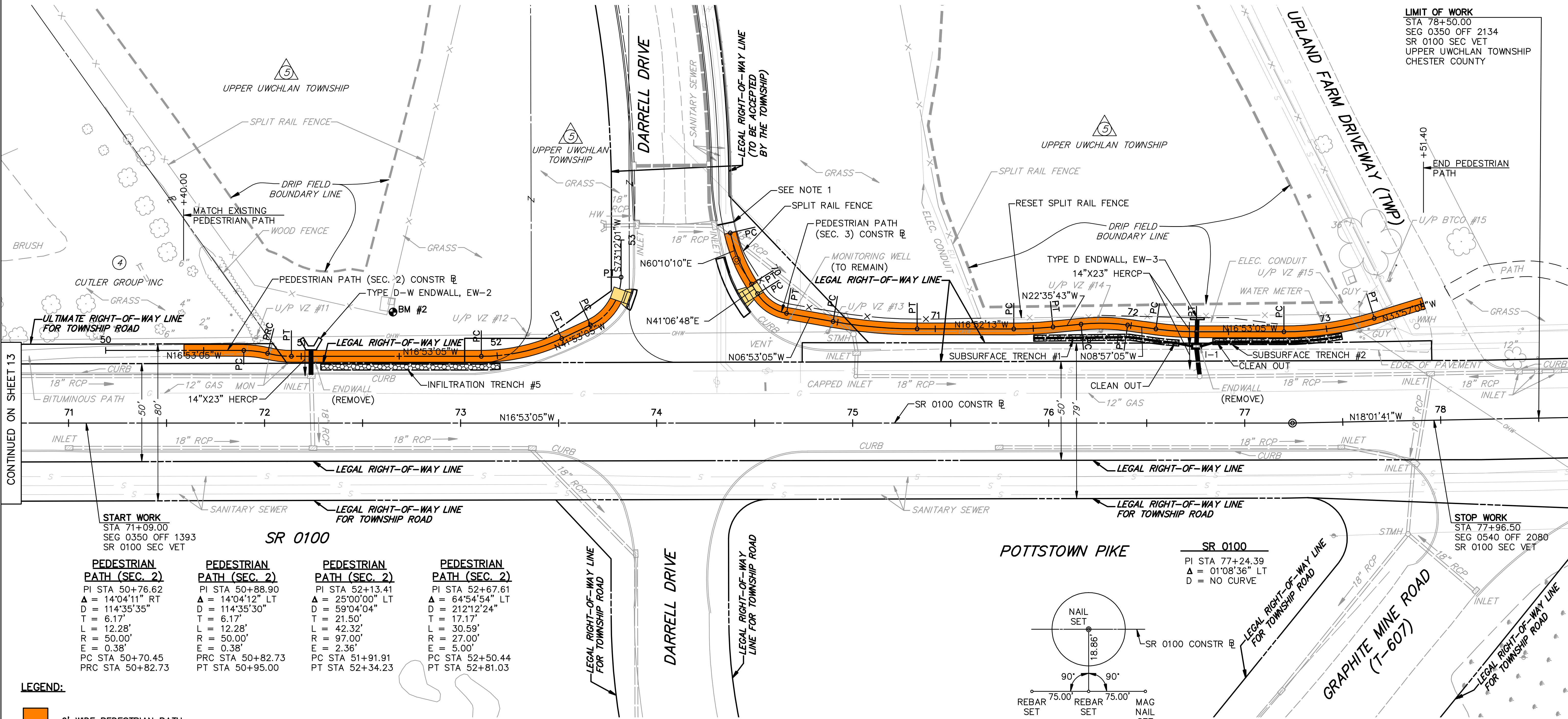
**PEDESTRIAN
PATH (SEC. 3)**

PI STA 72+23.27
 $\Delta = 07^{\circ}56'00''$ LT
D = 38'11'50"
T = 10.40'
L = 20.77'
R = 150.00'
E = 0.36'
PC STA 72+12.86
PT STA 72+33.63

**PEDESTRIAN
PATH (SEC. 3)**

PI STA 73+01.79
 $\Delta = 17^{\circ}04'03''$ LT
D = 36'29'39"
T = 23.56'
L = 46.77'
R = 157.00'
E = 1.76'
PC STA 72+78.23
PT STA 73+25.00

LIMIT OF WORK
STA 78+50.00
SEG 0350 OFF 2134
SR 0100 SEC VET
UPPER UWCHLAN TOWNSHIP
CHESTER COUNTY



LEGEND:

- 6' WIDE PEDESTRIAN PATH
- DRIVEWAY ADJUSTMENT
- CURB RAMP (REFER TO ADA PLAN)
- REMOVE EXISTING TREE/SHRUB

NOTE:
1. CUT EXISTING SIDEWALK IN ORDER TO
MATCH PROPOSED PATH WITH A CLEAN EDGE.



FOR PROFILE SEE SHEET 17

SURVEY BOOK NO. FTW-0041

DISTRICT	COUNTY	ROUTE	SECTION	SHEET	
6-0	CHESTER	0100	VET	15 OF 19	
	UPPER UWCHLAN TOWNSHIP				
REVISION NUMBER	REVISIONS			DATE	BY

**PEDESTRIAN PATH
(SEC. 4)**

PI STA 10+50.95
Δ = 11°12'29" RT
D = 55°37'37"
T = 10.11'
L = 20.15'
R = 103.00'
E = 0.49'
PC STA 10+40.85
PRC STA 10+60.99

**PEDESTRIAN PATH
(SEC. 4)**

PI STA 10+76.01
Δ = 58°09'39" LT
D = 212°12'24"
T = 15.02'
L = 27.41'
R = 27.00'
E = 3.89'
PC STA 10+60.99
PRC STA 10+88.40

**PEDESTRIAN PATH
(SEC. 4)**

PI STA 10+97.17
Δ = 60°35'44" RT
D = 381°58'19"
T = 8.76'
L = 15.86'
R = 15.00'
E = 2.37'
PC STA 10+88.40
PRC STA 11+04.27

**PEDESTRIAN PATH
(SEC. 4)**

PI STA 11+11.92
Δ = 21°39'50" LT
D = 143°14'22"
T = 7.65'
L = 15.12'
R = 40.00'
E = 0.73'
PC STA 11+04.27
PT STA 11+19.39

**PEDESTRIAN PATH
(SEC. 4)**

PI STA 11+96.71
Δ = 34°04'15" LT
D = 238°43'57"
T = 7.35'
L = 14.27'
R = 24.00'
E = 1.10'
PC STA 11+89.36
PRC STA 12+03.63

**PEDESTRIAN PATH
(SEC. 4)**

PI STA 12+12.02
Δ = 58°27'48" RT
D = 381°58'19"
T = 8.39'
L = 15.31'
R = 15.00'
E = 2.19'
PC STA 12+03.63
PRC STA 12+18.93

**PEDESTRIAN PATH
(SEC. 4)**

PI STA 12+31.90
Δ = 24°23'33" LT
D = 95°29'35"
T = 12.97'
L = 25.54'
R = 60.00'
E = 1.39'
PC STA 12+18.93
PT STA 12+44.48

**PEDESTRIAN PATH
(SEC. 4)**

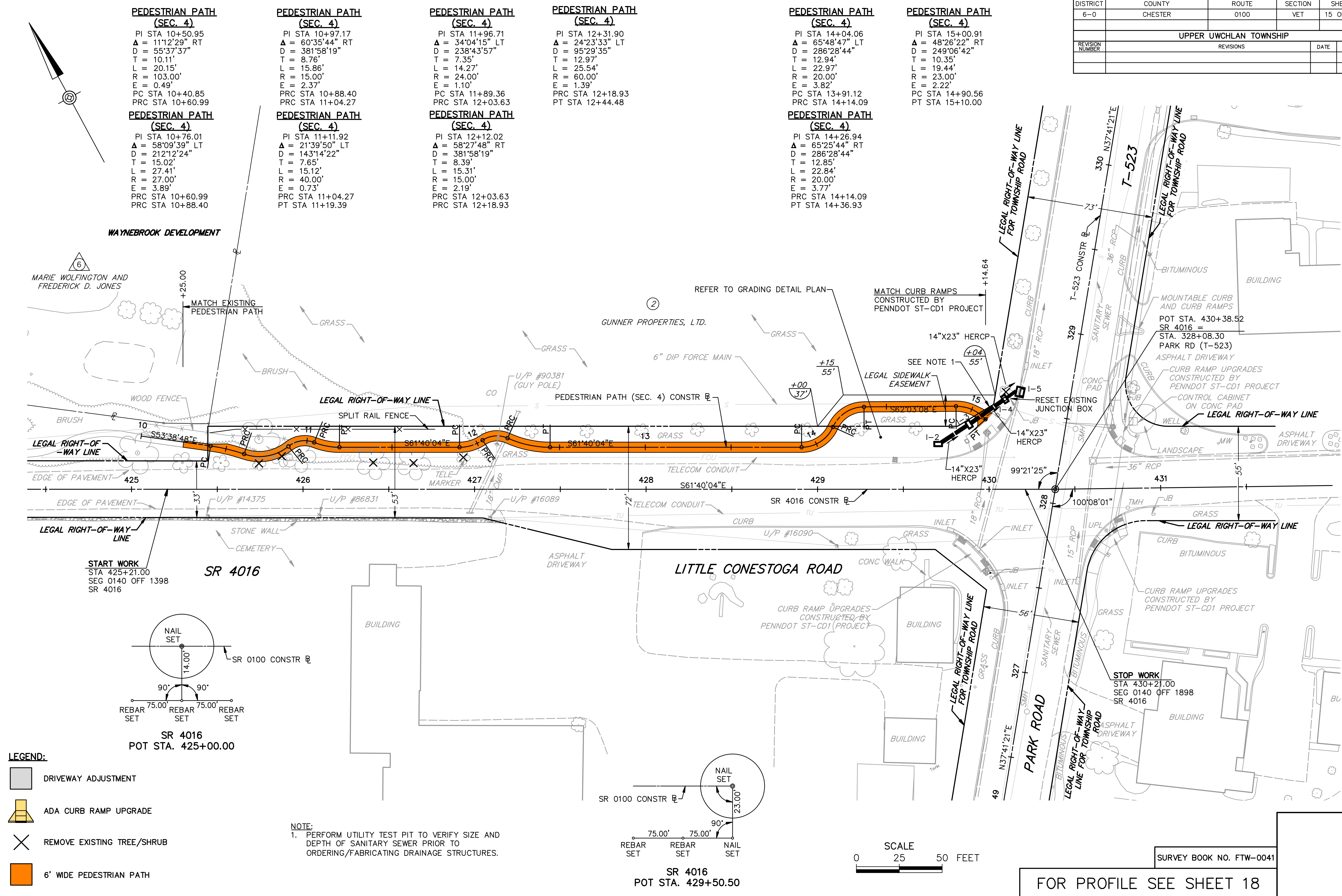
PI STA 14+04.06
Δ = 65°48'47" LT
D = 286°28'44"
T = 12.94'
L = 22.97'
R = 20.00'
E = 3.82'
PC STA 13+91.12
PRC STA 14+14.09

**PEDESTRIAN PATH
(SEC. 4)**

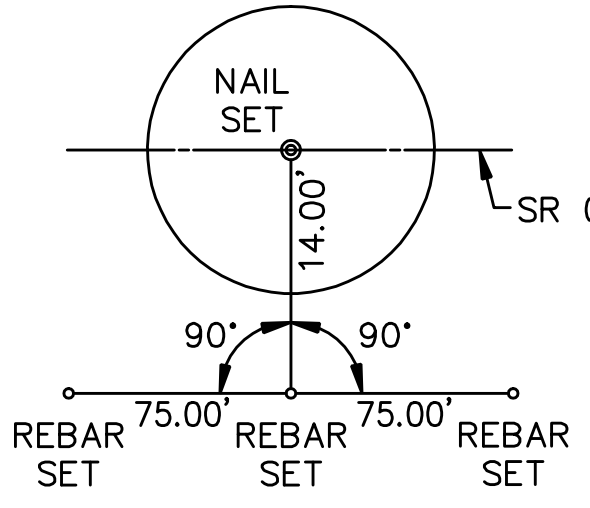
PI STA 14+26.94
Δ = 65°25'44" RT
D = 286°28'44"
T = 12.85'
L = 22.84'
R = 20.00'
E = 3.77'
PC STA 14+14.09
PT STA 14+36.93

**PEDESTRIAN PATH
(SEC. 4)**

PI STA 15+00.91
Δ = 48°26'22" RT
D = 249°06'42"
T = 10.35'
L = 19.44'
R = 23.00'
E = 2.22'
PC STA 14+90.56
PT STA 15+10.00

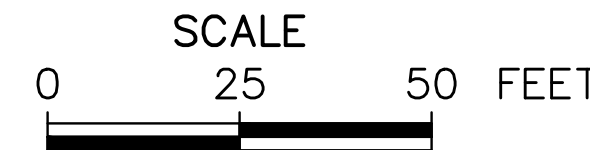
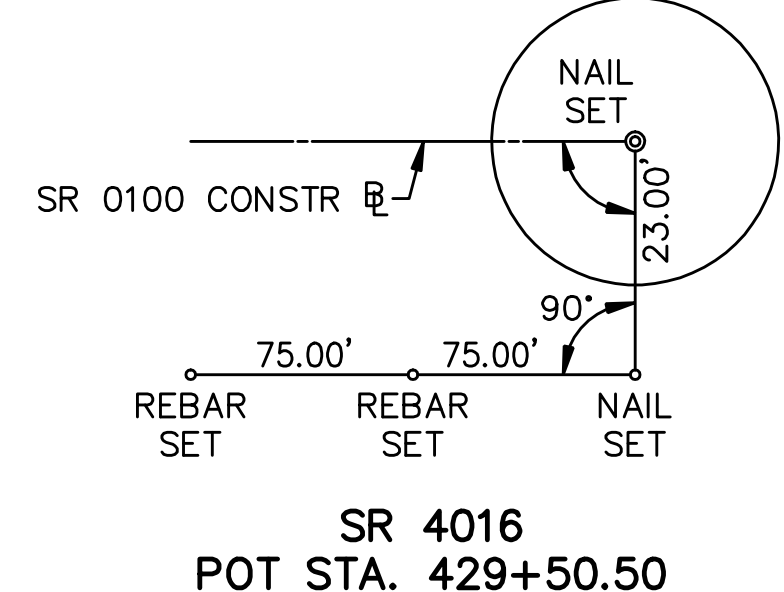


SR 4016
POT STA. 425+00.00



- LEGEND:**
- DRIVEWAY ADJUSTMENT
 - ADA CURB RAMP UPGRADE
 - REMOVE EXISTING TREE/SHRUB
 - 6' WIDE PEDESTRIAN PATH

NOTE:
1. PERFORM UTILITY TEST PIT TO VERIFY SIZE AND DEPTH OF SANITARY SEWER PRIOR TO ORDERING/FABRICATING DRAINAGE STRUCTURES.



SURVEY BOOK NO. FTW-0041

FOR PROFILE SEE SHEET 18