



UPPER UWCHLAN TOWNSHIP

140 Pottstown Pike
Chester Springs, PA 19425
(P) 610-458-9400 (F) 610-458-0307
www.upperuwchlan-pa.gov



ADMINISTRATION

Date: November 18, 2020

FOR IMMEDIATE RELEASE

SUNOCO PIPELINE CONSTRUCTION IN MEADOW CREEK LANE

CHESTER SPRINGS, PA – Sunoco Mariner East pipeline construction is slated to begin as early as late this week in the roadway of Meadow Creek Lane. The pipeline installation will be accomplished through the open trench method. The open cuts in the roadway will be similar to utility projects. Please see the attached map for location details.

Crews plan to open about 400 to 500 linear feet of the road at a time to install pipe segments. As each segment is installed, the roadway will be backfilled and paved. Any portion of the road that is not closed at the end of a workday will be covered with steel plates. As much as possible, one lane of the roadway will be kept open to traffic. When this is not possible, motorists will be re-directed to the northeast end of Meadow Creek Lane. When the construction is completed, the entire roadway will be repaved in accordance with Township specifications.

Sunoco land agents will communicate directly with residents daily to minimize impact on driveway access, etc.

What about the construction noise?

Sunoco will be subject to the Township's noise ordinance and will only be permitted to operate between 7:00 am and 7:00 pm on weekdays, and between 9:00 am and 5:00 pm on Saturdays. Work will not be permitted on Sundays or holidays.

Will school buses, emergency vehicles, and trash trucks have access?

The school district, emergency service agencies, and trash and recycling haulers have each been notified about the construction. They will make the necessary adjustments to their routes.

Will there be security in the neighborhood?

Yes. Zorion Security personnel contracted by Sunoco will be on site 24/7 beginning Saturday, November 21. The Upper Uwchlan Township Police Department has met with the security management.

What about COVID safety?

Construction personnel and land agents who are working on site are subject to daily health screenings and temperature checks. Masks will be worn by all personnel on site when proper social distance cannot be maintained and tasks being performed allow it.

When will the project be completed?

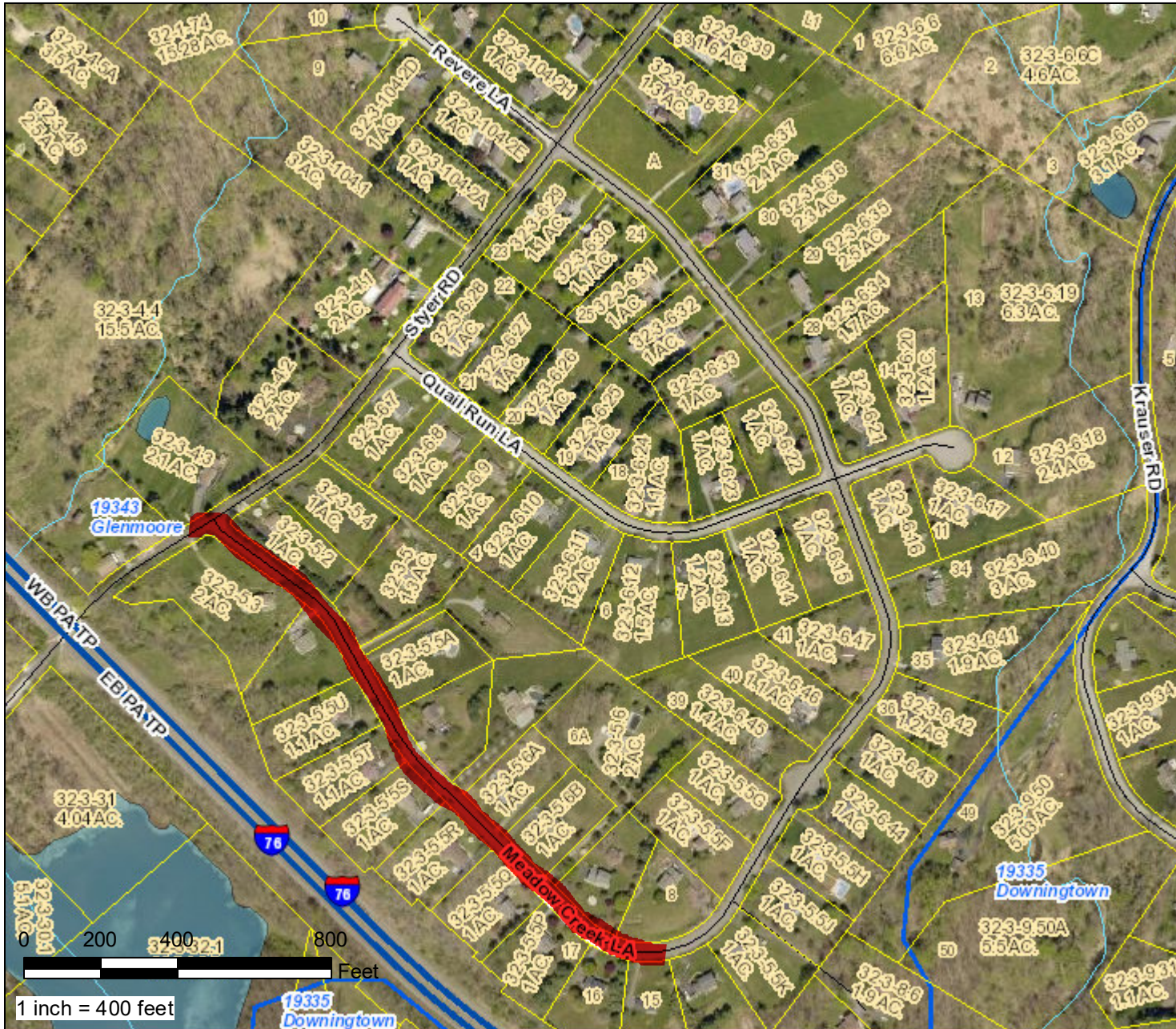
Timing will depend upon weather and subsurface conditions. Completion by late winter is anticipated.

Upper Uwchlan Township is a Township of the Second class, population 11,500, located in central Chester County, PA. Visit us on the web at www.upperuwchlan-pa.gov. Like us on Facebook and Twitter @upperuwchlan.

#####

Meadow Creek Lane Construction

COUNTY OF CHESTER
PENNSYLVANIA



 Construction Location

Map Created:
Monday, November 16, 2020

County of Chester



Limitations of Liability and Use:
County of Chester, Pennsylvania makes no claims to the completeness, accuracy, or content of any data contained herein, and makes no representation of any kind, including, but not limited to, the warranties of merchantability or fitness for a particular use, nor are any such warranties to be implied or inferred with respect to the information or data furnished herein. For information on data sources visit the GIS Services page listed at www.chesco.org/gis.